

Leica ScanStation Pxx Data Copy Tool

Introduction

The *Pxx Data Copy Tool* provides data download of several projects in one step or just a subset of a project from the *ScanStation Pxx* to a computer.

The data stored on the scanner can easily be reviewed with the integrated MMI-style viewer. The already transferred data which is stored on your local drive can also be reviewed.

Log files from the *ScanStation Pxx* can also be transferred to a computer.

Installation

Unzip the *PxxDataCopy_x.xx.xx.xxx.zip* and run the *Setup.exe* to install the *Pxx Data Copy Tool* on your computer. The install shield wizard will guide you through the installation of the program.

Preparation

Boot up the *ScanStation Pxx* and make sure the scanner is connected via data transfer cable (*GEV228*) to:

- direct network plug on your computer
- the company's network

The direct connection may take some seconds to be established and your computer will indicate a local area connection with limited connectivity.

Using Pxx Data Copy Tool

Double click the *PxxDataCopy.exe* from the installation folder or the application shortcut created on the desktop during installation to start the *Pxx Data Copy Tool*.

The Copy Tool Program displays 5 buttons in the button bar.

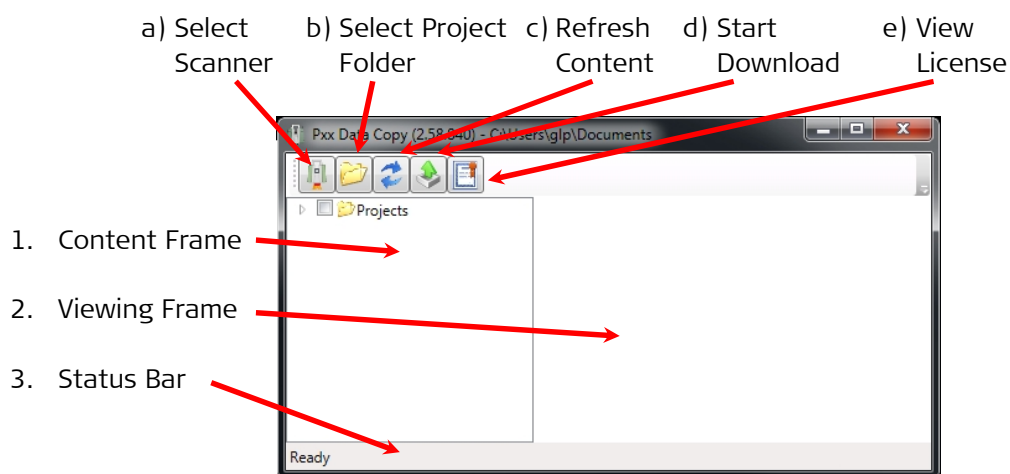


Figure 1: Pxx Data Copy Tool

- a) Click the *Select Scanner* button from the button bar to open a list which displays all available scanners within the network. Highlight the scanner's name and click "OK" to connect to the selected ScanStation Pxx.

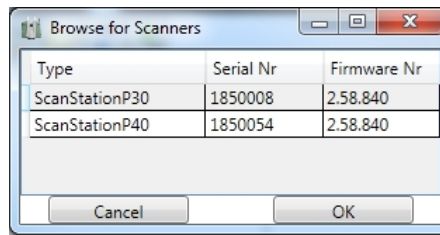


Figure 2: ScanStation Pxx Selection

The connection is successfully established when the *ScanStation's* serial number is displayed in the title bar next to the Data Copy Tool's version number.

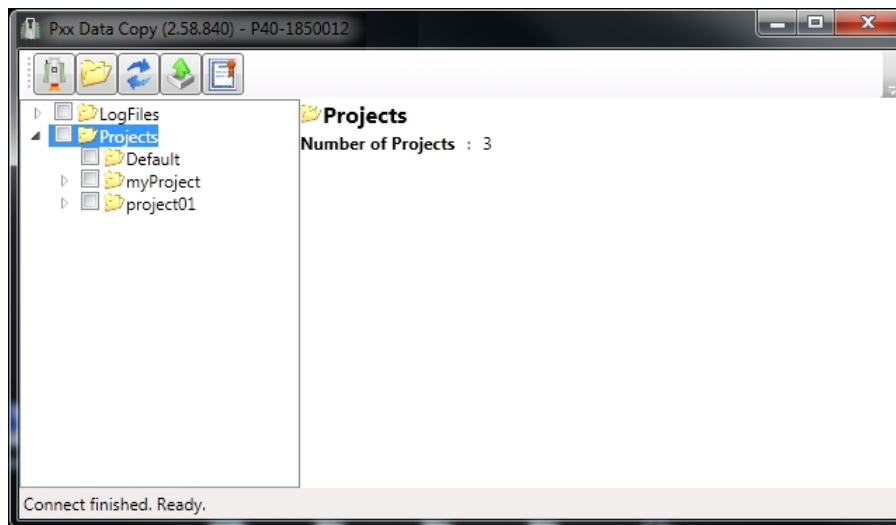


Figure 3: Connected Data Copy Tool

- b) Click the *Select Project Folder* button to load a project folder stored locally on your computer which contains at least one scanning project. The data can be reviewed within the *Viewing Frame (2)* by selecting either a scan, a target or an image.

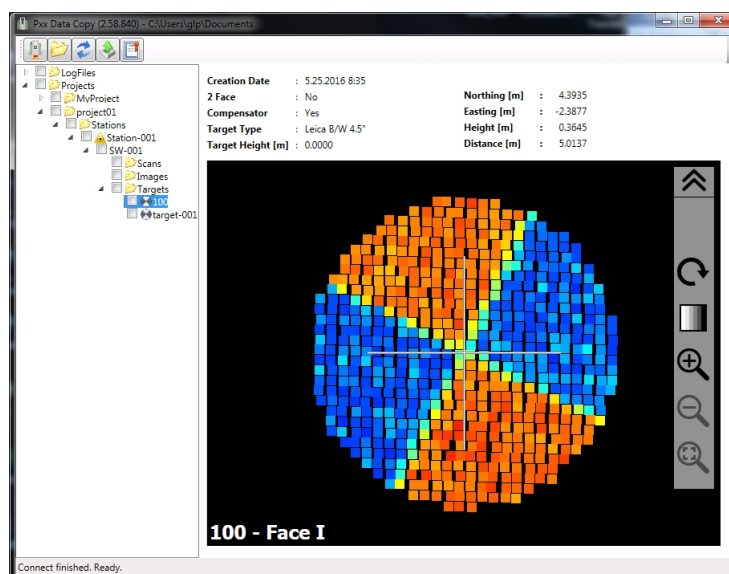


Figure 4: Review Project on local Computer

- c) The *Refresh Content* button is reloading the project structure from either the scanner or the locally stored data into the *Content Frame (1)*. This may be needed if the scanner is acquiring scans into a new created project during the *ScanStation Pxx* is still connected to your computer.

- d) The *Pxx Data Copy Tool* provides downloads of project data and log files. Click the *Start Download* button to copy the selected data within the *Content Frame (1)* to a location of your choice. Within the upcoming window (*Figure 5*) the destination folder on the local device can be chosen.

Note: Projects which are opened from a local device cannot be copied to anywhere else.

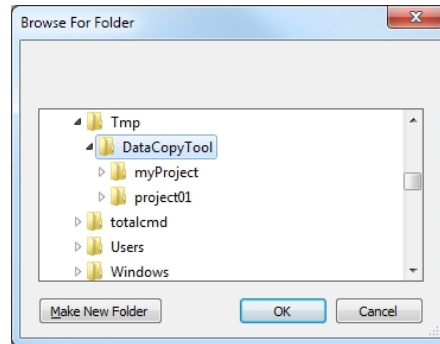


Figure 5: Location to Data Storage

During the download the *Status Bar (3)* is displaying a progress bar.

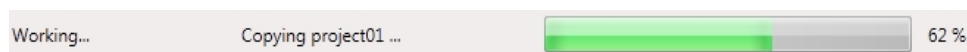


Figure 6: Status Bar (3)

When the Status Bar is showing *Ready* again then the download is successfully finished.

- e) By pressing the *View License* button the copyright information about installed freeware software is displayed.

